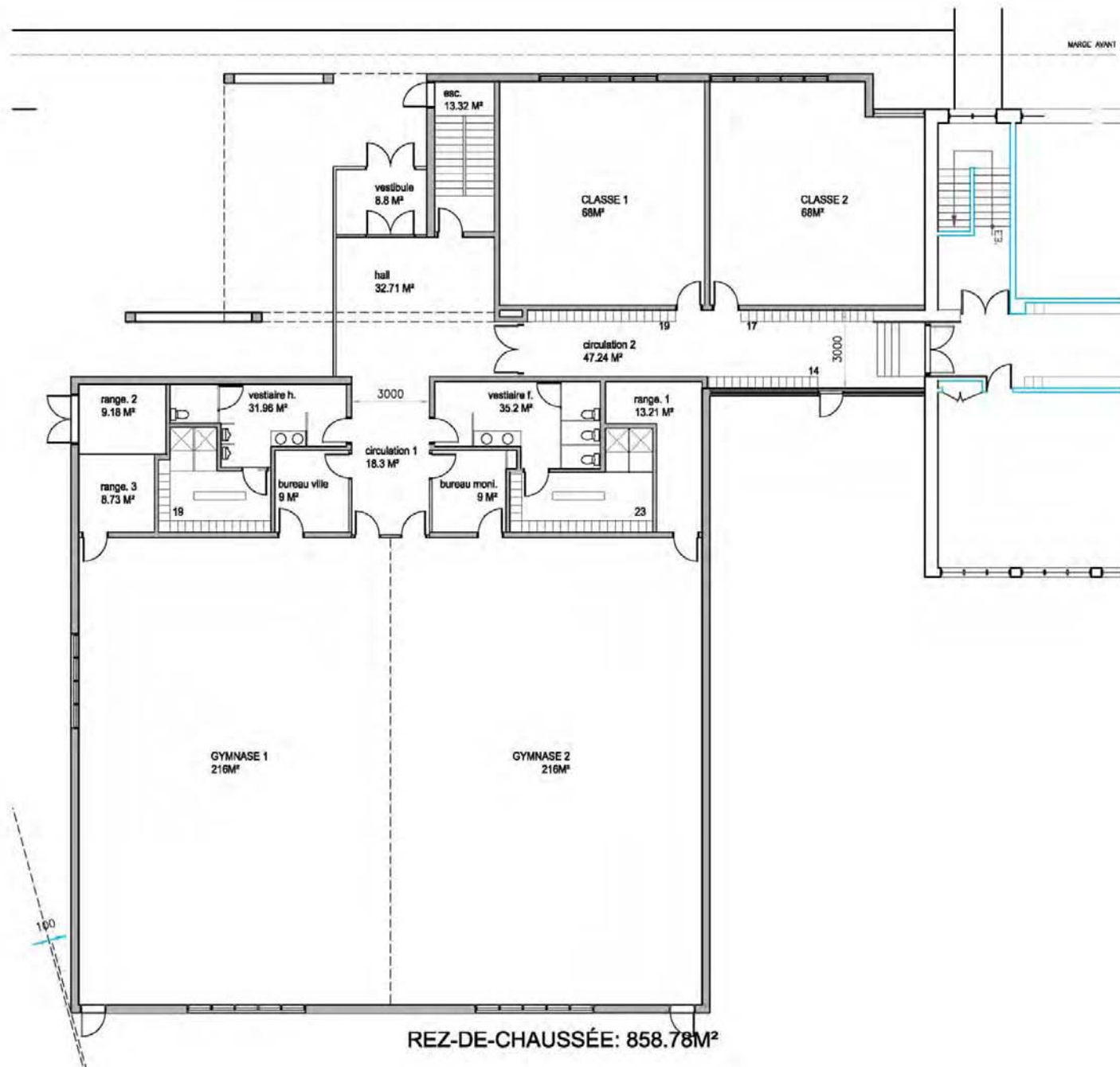
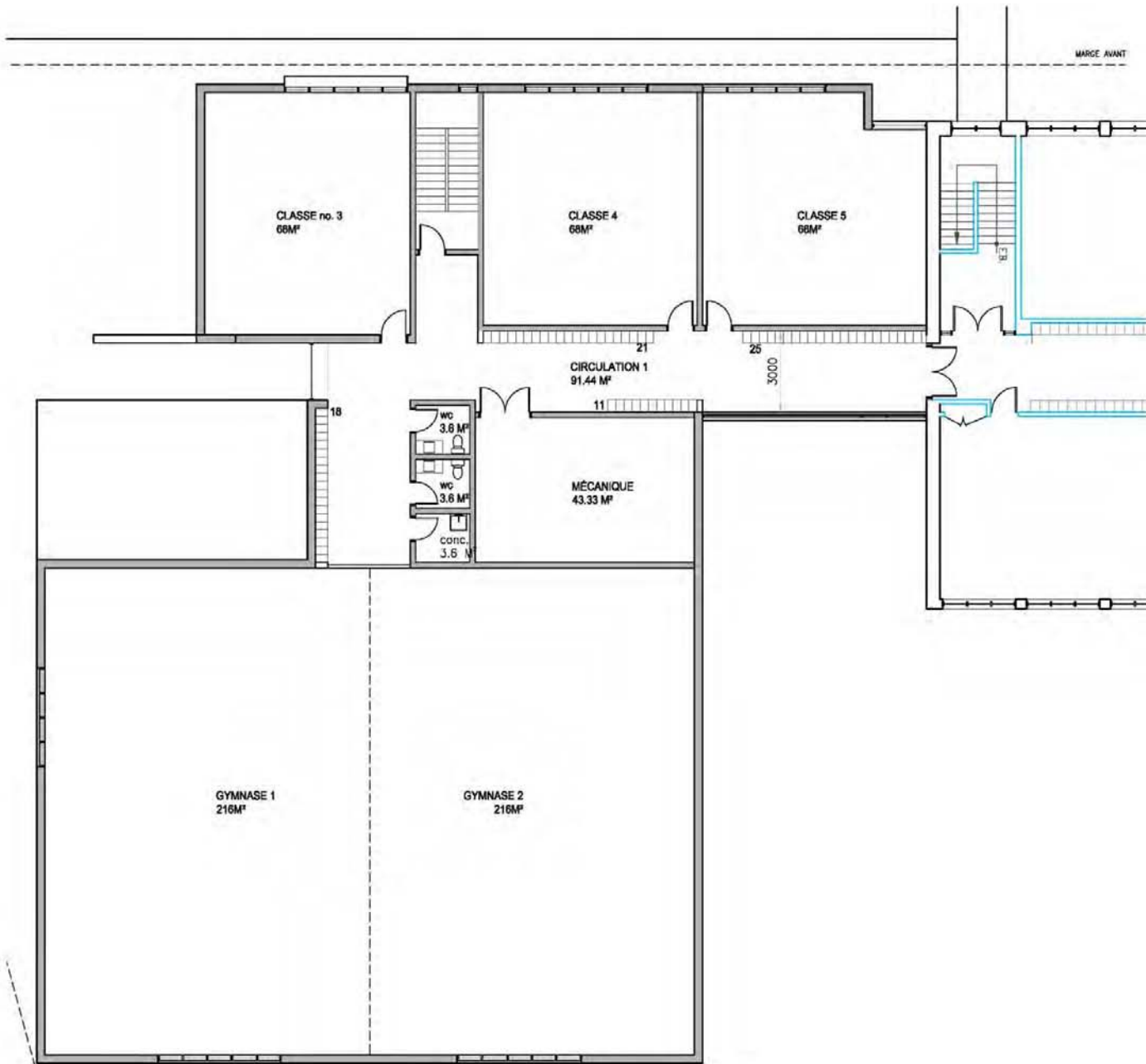


STATIONNEMENT	
1 CASE / 2 EMPLOYÉS = 2.5 CASES	
1.5 CASES / CLASSE = 7.7 CASES	
TOTAL = 10 CASES ADDITIONNELLES	
CASES EXISTANTES = 27	
NOUVELLES CASES = 10	
TOTAL = 37 CASES	

Implantation 1:500





ÉTAGE: 402.76 M²